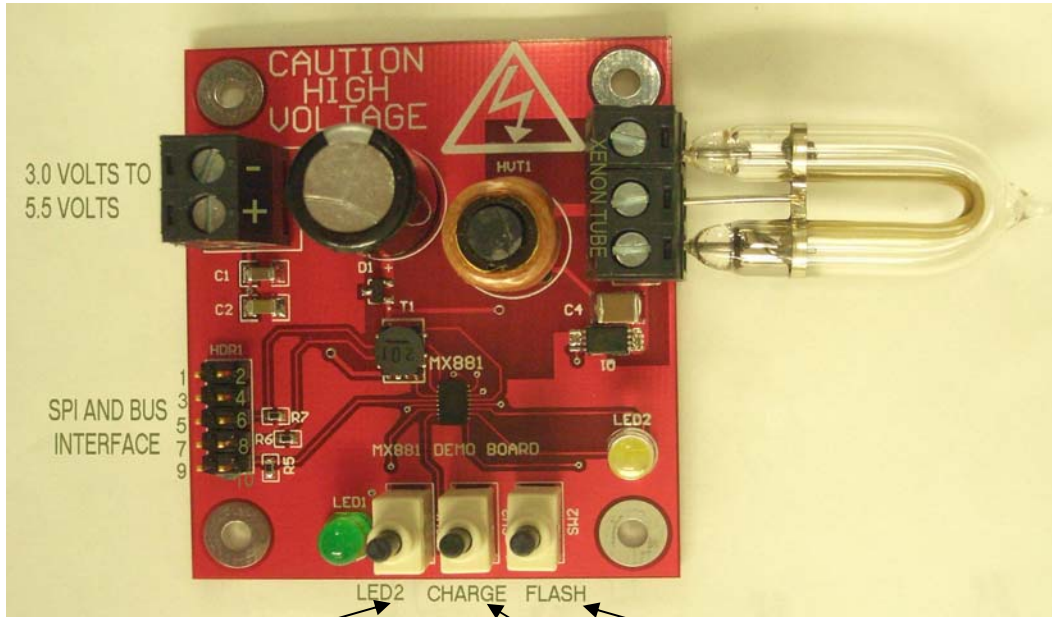


Micronix an IXYS Company
MX881 XENON FLASH CONTROLLER



When this Button SW1 (LED_EN) is pushed, LED driver output is enables and (white) LED2 will lite.

Fig.1

To demo the flash, C4 has to be charged . Push and hold Button SW3, until (green) LED1 turns off.

Fig.2

This Button SW2 will cause the Xenon tube to flash, provided that C4 has been charged . See Fig.2.

Fig.3

